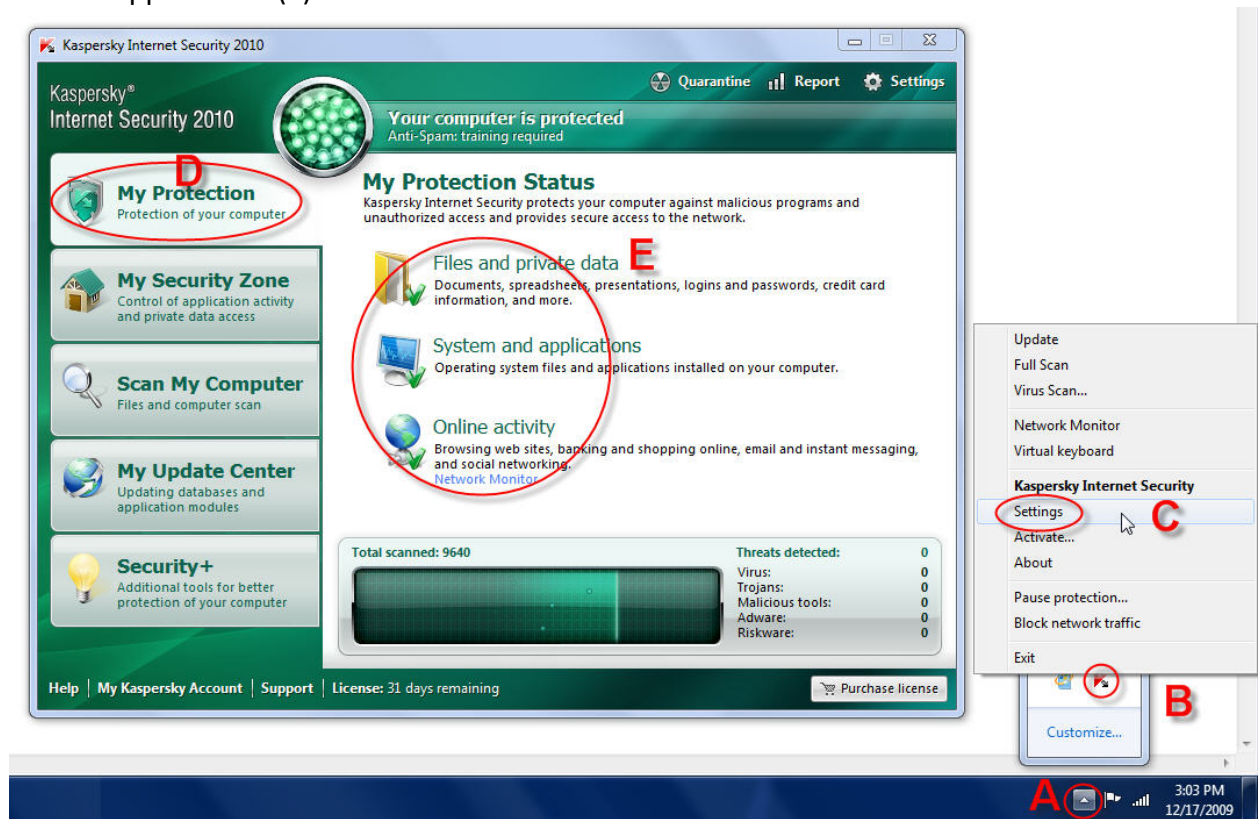


Kaspersky Antivirus and Internet Security 2010

Kaspersky Internet Security software sometimes interferes with the proper functioning of some Risk Simulator tools. The symptom includes getting error messages when running forecasting methods or reports seem to refuse to be created. There is a very simple configuration you need to turn on in Kaspersky that will fix this problem.

1. Keep Excel open and running.
2. Start Kaspersky Internet Antivirus either from the Start Programs location or double-click the icon at the bottom right of your screen (B) and select Settings (C).
3. Inside Kaspersky antivirus software, click on the following: My Protection (D) >> Systems and Applications (E).



4. The select Application Control >> Options: Threats and Exclusions (F) >> Exclusions: Settings... (G) >> Trusted Applications (H) >> Add (I) >> then add Microsoft Excel here* (J)>> make sure Do Not Monitor Application Activity (L) option is selected.
5. Restart Excel and use Risk Simulator as usual.

* If you have Excel running in the background, you can click on Applications >> Microsoft Excel. Otherwise, the Excel option may not be listed here, and you can click Browse point to the program location where Excel.exe is located such as C:\Program Files\Microsoft Office\OfficeX\Excel.exe

